



23andMe Research Portal Platform

Since 2007, 23andMe has been generating worldwide consumer interest in genomics by helping people access, understand and benefit from the human genome. These efforts have resulted in the creation of a massive, re-contactable genotyped cohort consented for research.

23andMe is now enabling access to this database for qualified academic researchers through our Research Portal, through our Academic partner Program. We hope this will help accelerate the pace of the genetic understanding of disease and drug discovery and make real-time research a reality.



23andMe's Research Portal: Key Statistics



750K+
genotyped
individuals



600K+
consented
for research

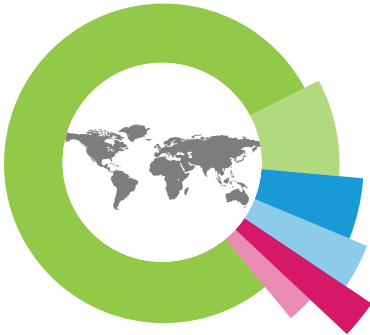


200M
phenotypic
data points



1K
curated
phenotypes

Demographics



77%
European

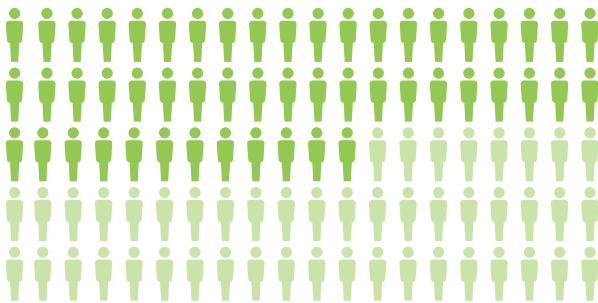
4%
East Asian

10%
Latino

2%
South Asian

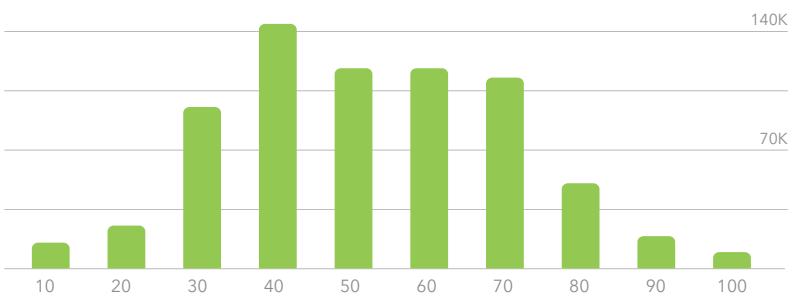
5%
African
American

2%
Other



52%
Men

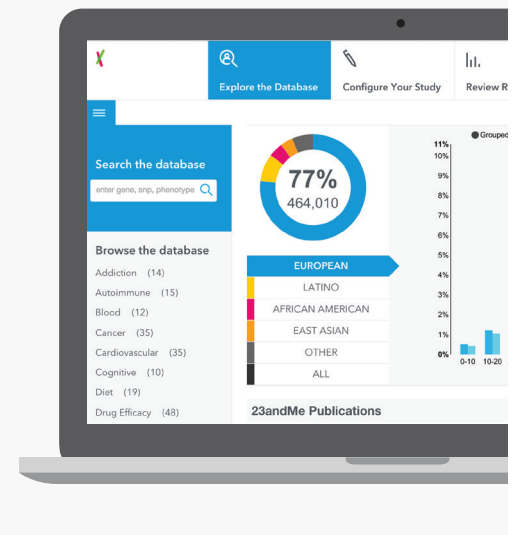
48%
Women



Age Distribution

Types of Data Available

- Genotypes
- Conditions/Diagnoses
- Medication Usage
- Response to Medication
- Family History of Disease
- Health Behaviors
- Personality Traits
- Environmental Exposures
- Geographic Location



Simplify Your Research and Get to Publications Faster



Conduct virtual GWAS and PheWAS studies without having to collect a single sample



Discover more about etiology of disease associated variants by collecting new cross-sectional and longitudinal data



Understand the relationships between phenotype, genotype, ancestry, demographics, environment and behavior



Explore the molecular basis for drug response, plus predict side effects and explore drug repositioning opportunities



Study rare or ancestry specific variants and unique phenotypes



Recruit study participants and clinical trial participants from our cohort
(Available late 2015 - please inquire)

Large Case/Control Cohorts Across Diverse Disease Areas

Oncology Cohorts

33,000
with cancer

405,000
confirmed controls

6,000
with breast cancer

198,000
confirmed controls

4,500
with melanoma

424,000
confirmed controls

5,000
with prostate cancer

221,000
confirmed controls

5,000
undergone chemotherapy

173,000
confirmed controls

1,000
with sarcoma

174,000
confirmed controls

6,000
with squamous cell carcinoma

417,000
confirmed controls

1,700
with colorectal cancer

431,000
confirmed controls

Autoimmune Cohorts

1,500
with lupus

367,000
confirmed controls

6,000
with rheumatoid arthritis

380,000
confirmed controls

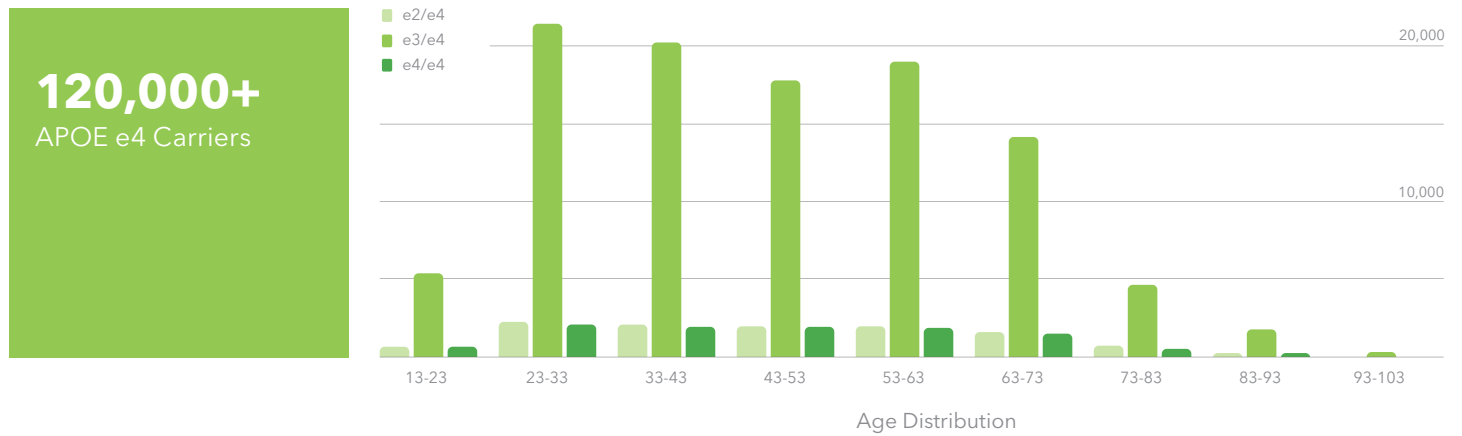
605
with celiac disease

102,000
confirmed controls

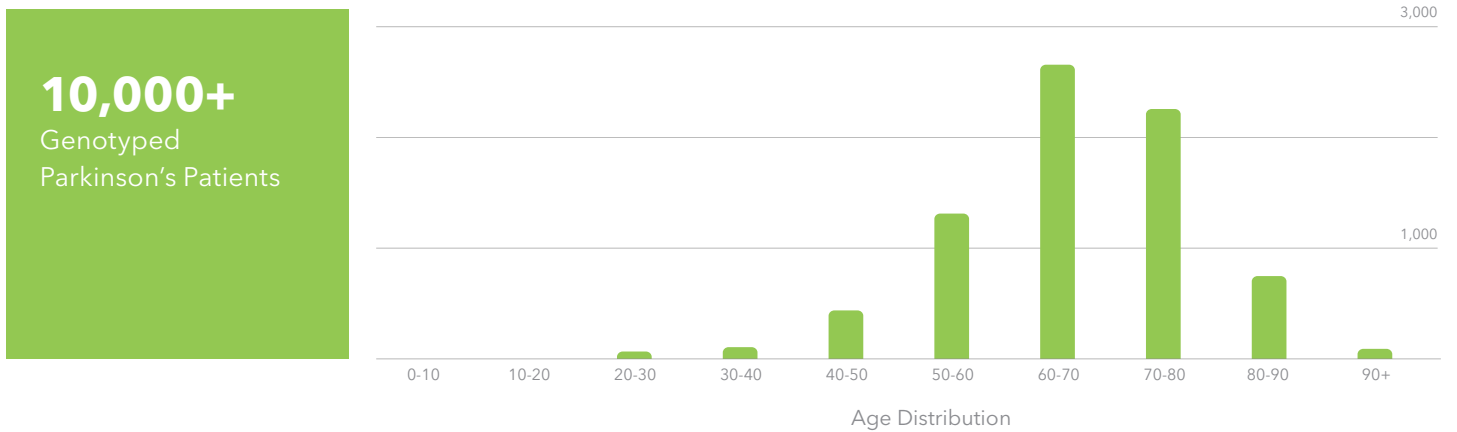
3,000
with IBD

148,000
confirmed controls

World's Largest Recontactable APOE e4 Cohort



World's Largest Genotyped Parkinson's Cohort



23andMe Research Portal is currently in early access, to discuss your project with a member of our team please contact portal-access-requests@23andMe.com

For further information please visit portal.23andMe.com